



Orange Wave Band
Program Guidelines
2024-2025

ROCKWALL HIGH SCHOOL ORANGE WAVE BAND PROGRAM GUIDELINES 2024-2025

FOREWORD

CONGRATULATIONS on your decision to be part of the fine tradition of the **AWESOME ROCKWALL ORANGE WAVE BAND!** This booklet is designed as a guide to provide specific details concerning all aspects of the band program to parents and students. For any further information, please feel free to call the Rockwall High School Band office at 469-698-7225. Additionally, please check the website for updates throughout the year at www.orangewaveband.com.

WHAT IS BAND REALLY ALL ABOUT – MISSION AND VISION

As we begin this year together, it is important to discuss and understand the effect that band can have on your life and the scope in which band can have an impact. Of course, as a body of musicians, we desire to produce beautiful music together, but as you already know, band is so much more than just a music class. As you identify and evaluate members of our community, you would be pleased to find that leaders in every field received their start, and often times credit their success, to the time they spent in their high school band programs. Band is a unique experience which allows us to learn not ONLY music, but also the traits sought after by employers, universities, and your future spouses! Band teaches discipline, work ethic, responsibility, punctuality, communication skills, and leadership among many others. If you were to poll recruiters at any major university, you would find that most, if not all, would tell you that being in band sets you apart from the rest. Recruiters seek out high achieving students who have given their time and energy to band because they KNOW that these students will succeed amongst the rigors of university life.

So, “WHAT DOES THAT MEAN TO ME,” you ask? It means that if you can make it here, you can make it anywhere! Your hard work and dedication to our program makes you extremely desirable to potential employers and major universities. Above all else, band is designed to teach you the life leadership skills that will allow you to be successful in your future endeavors!

GOALS

We want our individual band students to achieve at the highest level possible for their current ability level on their instrument and to maximize their time during rehearsals, masterclasses, and lessons in order to continually improve.

All performing ensembles at RHS will give performances of the highest level throughout the year. Our ensemble success is determined by our level of performance, not scores and rankings.

Our students will maintain the highest of academic standards and be leaders in the classroom at RHS. Whether in advanced or on level courses our students will perform at a high level academically, just like we expect them to musically.

We will engage with the community through performance and service. Putting our wonderful students out in front of our community, and even at the state and national levels, is a positive experience for everyone involved.

DO I (AND MY PARENTS) REALLY NEED TO READ THESE PROGRAM GUIDELINES?!?

In a word, YES!!! Although you have been bombarded with countless handouts this week, the information included in this document guides our program. It protects you and the Orange Wave Band. It is in your best interest to be familiar with the guidelines outlined in the next several pages, as they will guide the operation and decision making process that determine how band placements are made, who receives private lesson scholarships, how grades are determined, and much, much more. By signing the forms at the end of this document, both you, and your parents, are agreeing to all aspects included in the program guidelines. Like any binding document, it is important to read and understand BEFORE you sign!

Thanks for taking the time to familiarize yourself with our guidelines. Please understand that this is not an all-inclusive list; individual situations will be assessed on a case by case basis, taking into consideration the overall good of the group and then its individual members. The following guidelines were drawn up not to punish anyone or restrict your personal freedoms, but rather to allow us to be aware of the rules necessary for keeping the Orange Wave Band functioning in a smooth and positive manner, protecting the rich history and tradition of the Orange Wave Band!

QUESTIONS/CONCERTS AND COMMUNICATION WITH DIRECTORS

RISD encourages parent participation in the development of our student musicians. We ask that parents follow the [UIL Parent handbook](#) regarding the content of Parent/Director meetings.

Appropriate concerns to discuss with a director:

1. The mental and physical treatment of your student.
2. What your student needs to do to improve.
3. Concerns about your student's behavior.

It is very difficult to accept that your student is not in the band or at the performance level you hoped. Directors make decisions based on what they believe is in the best interests of all students participating. As you can see from the list above, certain things can and should be discussed with your student's director. Other things, such as those listed next, must be left to the discretion of the director.

Issues NOT appropriate for discussion with your student's director:

1. The chair or spot in the band program your student has earned.
2. Music selection or marching suggestions.
3. Any situation that deals with other student-musicians.

Parent-Student-director Communication

Information will primarily be communicated through student-musicians at meetings, through Charms and at Orange Wave Booster Meetings. Additional reminders/communication will utilize the Remind App. This platform allows for communication between all parties. Remind class codes were sent out via email towards the end of last month.

Parent-Student Concerns

We welcome parental involvement in the development of student musicians. We understand that misunderstandings may occur in our program. Please follow the diagram two pages below so that we can best address your concern. The director closest to the situation will have the most information and will be able to address your concern more quickly.

THREE BASIC RULES

of the

ORANGE WAVE BAND:

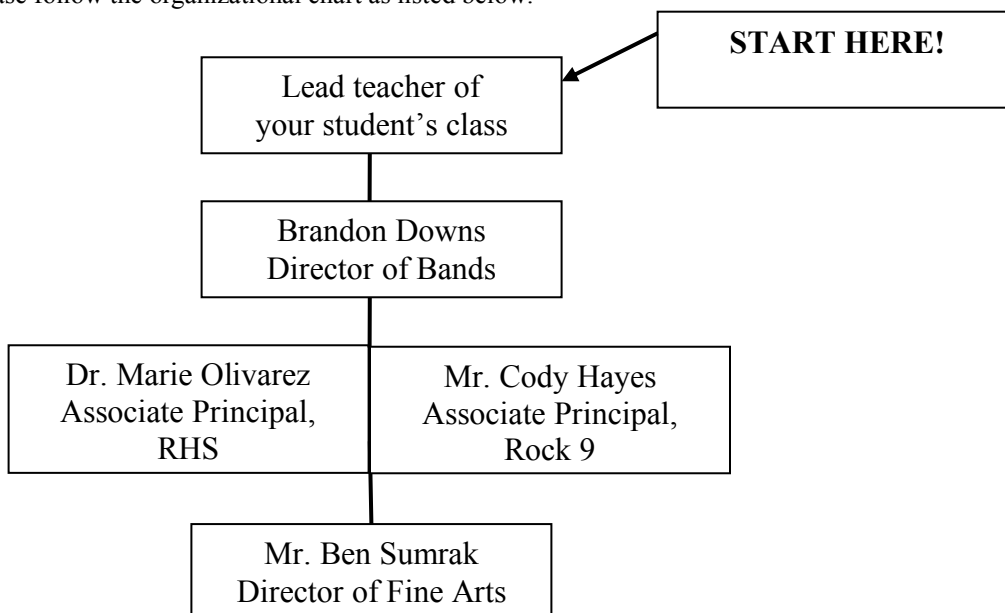
- 1. The “Do Right” Rule – always do what’s right and avoid what’s wrong.**
- 2. Demand excellence (first from yourself and then those around you).**
- 3. Follow the Golden Rule.**

ORANGE WAVE BAND
FACULTY AND STAFF

Mr. Brandon Downs	Director of Bands	brandon.downs@rockwallisd.org	(469) 698-7225
Ms. Carol Meadows	Associate Director	carol.meadows@rockwallisd.org	(469) 698-7298
Mr. Chris Clark	Associate Director	chris.clark@rockwallisd.org	(469) 698-7297
Ms. Arianna Parks	Associate Director	arianna.parks@rockwallisd.org	(469) 698-2955
Mr. Russell Lancaster	Percussion Director	russell.lancaster@rockwallisd.org	(469) 698-7296
Mr. Trey Lewis	Percussion Director	richard.lewis@rockwallisd.org	(469) 698-2955
Mr. Ricardo Trejo	Colorguard Director	ricardo.trejo@rockwallisd.org	(469) 698-7298

ORGANIZATIONAL CHART

We know from time to time parents and students may have concerns and questions in regard to policies and procedures. To assist you in resolving any concerns, please follow the organizational chart as listed below:



BAND ORGANIZATIONS

Band (including colorguard/winterguard) is a full year course consisting of two distinct semesters or “seasons”. Because of this, schedule changes out of band will not be considered for the second semester, unless initiated by Mr. Downs. By signing the program guidelines acknowledgement form, parents and students are committing to completing the entire, full year process of band.

The fall semester is primarily considered the marching season while the spring semester is considered the concert season. The following is a brief description of the various groups that are associated with the Rockwall High School band program:

MARCHING BAND

Directors: Brandon Downs, Carol Meadows, Chris Clark, Arianna Parks, Russell Lancaster, Trey Lewis, and Ricardo Trejo

The Orange Wave Marching Band is made up of students from **all** concert bands. The Orange Wave Band has a long history of great traditions, pride and excellence. The marching band performs at all RHS pep rallies, at all RHS football games, and at marching contests and exhibitions. **Membership in the Marching Band is required of all band students.**

CONCERT BANDS

There are three concert ensembles at Rockwall High School. Every student who is signed up for band must audition to be placed in a band class. Placement in Concert Band, Symphonic Band, and Wind Ensemble is based on a series of criteria. Some of these criteria are: the audition itself, participation in All-Region and Solo/Ensemble contest, participation in private lessons, conduct, attitude, dependability, eligibility, attendance for rehearsals and performances, and the student's demonstrated ability to perform the level of the music for the band in which they are placed.

Auditions will be held at the end of each semester. Students will play a short audition for the band staff and will be placed in a performing ensemble that best suits their current ability and level of maturity. It is important to understand that the selection criteria for each ensemble is NOT based solely upon the audition. The criteria listed above plays a large role in the student’s band placement.

WIND ENSEMBLE

Director: Brandon Downs

The Wind Ensemble is the top performing ensemble at Rockwall High School. The band is scheduled 2nd/5th period. This band performs college level literature and performs numerous concerts during the year. Wind Ensemble students are required to attend sectionals outside of school time each week; moreover, they are required to audition by way of the All-State Band process and participate in Solo and Ensemble Contests. Any student that makes an all-region band is **REQUIRED** to see the process through to the finish, including participating in the clinic and concert. Members of the Wind Ensemble are strongly encouraged to participate in the Private Lesson Program. These students are quite serious about improving their musical abilities; therefore, most of these students have invested in professional quality musical instruments. The Wind Ensemble performs at the U.I.L. Concert and Sightreading Contest and attends a major music festival each spring, competing against the best concert bands from across the state and the nation. Additionally, all Wind Ensemble members are required to participate in Symphony Orchestra. This group will be comprised of students in grades 9 – 12.

SYMPHONIC BAND
Director: Carol Meadows

The Symphonic Band is the second performing ensemble at Rockwall High School. The band is scheduled 3rd/6th periods. This band performs upper-level high school concert band literature. Symphonic Band students are required to attend sectionals outside of school time each week. Students are required to audition by way of the All-State Band process and are required to participate in Solo and Ensemble Contests. Any student that makes an all-region band is REQUIRED to see the process through to the finish, including participating in the clinic and concert. A majority of Symphonic Band members participate in the private lesson program. The Symphonic Band performs at the U.I.L. Concert and Sightreading Contest and may attend a major music festival each spring, competing against the best concert bands from across the state and the nation. This group will be comprised of students in grades 10 – 12.

CONCERT BAND
Director: Chris Clark

The Concert Band is the third performing ensemble at Rockwall High School. The band is scheduled 4th/7th periods. This band performs upper-level high school concert band literature. Concert Band students are required to attend sectionals outside of school time each week. Students are required to audition for All-Region band, and required to participate in Solo and Ensemble Contest. Any student that makes an all-region band is REQUIRED to see the process through to the finish, including participating in the clinic and concert. A large number of Concert Band members participate in the private lesson program. The Concert Band performs at the U.I.L. Concert and Sightreading Contest and may attend a major music festival each spring, competing against the best concert bands from across the state and the nation. This group will be comprised of students in grades 10 – 12.

SYMPHONIC BAND
Director: Arianna Parks

The Rock 9 Symphonic Band is the top performing ensemble Rock 9. The band is scheduled 4th/7th periods. This band performs upper-level high school concert band literature. Rock 9 Symphonic Band students are required to attend sectionals outside of school time each week. Students are required to audition for the 9th Grade All-Region band and are required to participate in Solo and Ensemble Contests. Any student that makes an all-region band is REQUIRED to see the process through to the finish, including participating in the clinic and concert. A majority of Symphonic Band members participate in the private lesson program. The Rock 9 Symphonic Band performs at the U.I.L. Concert and Sightreading Contest and may attend a major music festival each spring, competing against the best concert bands from across the state and the nation. This group will be comprised of students in ninth grade.

CONCERT BAND
Directors: Chris Clark and Arianna Parks

The Rock 9 Concert Band is the second performing ensemble at Rock 9. The band is scheduled 3rd/6th periods. This band performs upper-level high school concert band literature. Concert Band students are required to attend sectionals outside of school time each week. Students are required to audition for the 9th Grade All-Region band and required to participate in Solo and Ensemble Contest. Any student that makes an all-region band is REQUIRED to see the process through to the finish, including participating in the clinic and concert. A large number of Rock 9 Concert Band members participate in the private lesson program. The Rock 9 Concert Band performs at the U.I.L. Concert and Sightreading Contest and may attend a major music festival each spring, competing against the best concert bands from across the state and the nation. This group will be comprised of students in ninth grade.

JAZZ ENSEMBLES

Director: Chris Clark

The Jazz Ensemble will meet during 1st and 8th periods. Membership in the Jazz Ensemble is by audition/interview. The Jazz Ensemble may perform at Jazz Festivals, the Jazz Concert, and the Spring Concert, as well as other civic events. All students in Jazz 1 are required to audition for All-Region Jazz. Any student that makes an all-region band is REQUIRED to see the process through to the finish, including participating in the clinic and concert. All students in Jazz Band must be concurrently enrolled in band, orchestra, or choir at RHS. This group will be comprised of students in grades 9 – 12.

PERCUSSION ENSEMBLES

Directors: Russell Lancaster and Trey Lewis

The Percussion Ensembles meet during the fall and spring semesters. A considerable amount of time is spent in class working on the ensembles but there will be sectionals outside of class that the students will be required to attend. The Percussion Ensembles perform at Solo & Ensemble, the Percussion Concert, and the Spring Concert. This group will be comprised of students in grades 9 – 12.

COLORGUARD/WINTERGUARD

Director: Ricardo Trejo

Colorguard meets in the fall semester and Winterguard meets in the spring semester. A considerable amount of time is spent in class working on the material but there will be rehearsals outside of class that the students will be required to attend. In order to be in Guard, students must be enrolled in the Colorguard/Winterguard class. Band students that are also in Guard must be enrolled in BOTH their band class and the Guard class. Students may not drop band in order to participate as a part of the Guard program. The Colorguard will perform at everything the marching band does. The Winterguard will attend winterguard contests and other various performances throughout the spring semester.

AUDITION PROCESS

We will re-audition for band placements each semester. Band placement auditions for the spring semester will happen in late November/early December each year. While there is a formal audition component to this audition that will consist of region music cuts and scales, a large portion of this audition is based on the participation in and level of success at the TMEA All-Region audition process.

Auditions for the fall semester will happen in late April/early May of the previous semester. This audition will consist of two audition etudes and a scale component. As mentioned above, the formal audition is just a portion of what is considered for a student's band placement.

PARTICIPATION EXPECTATIONS

Each band student is important to the success of our many activities. We **must** be able to count on 100% attendance at these performances. If a family emergency occurs unexpectedly, PARENTS please call the band office at (469) 698-7298 to relay that information via Ms. Meadows. Occasionally, there may be family commitments (weddings, graduations, etc.); we will **try** to be flexible and work with you on an individual basis. This must be discussed in detail well in advance (a month or more!).

Student job commitments and various other appointments are **NOT** reasons for an excused absence from band performances or rehearsals! Many band students work and successfully participate in band. We suggest that all working band students take a copy of their band calendar to his/her employer and clear all band performances and rehearsals. Almost all employers are very understanding and are flexible **if** they know of band commitments well in advance, and they understand that band performances are a **required** and vital part of the course work.

Work with employers to clear the evening marching rehearsals. **These extra rehearsals do not last all year.** (We are glad to talk to employers to validate student commitment.) If a band student has an **unexcused** absence from a performance/required function, they are subject to immediate removal from their marching spot in the program. Continued unexcused absences may result in immediate dismissal from the band program. Students that miss a rehearsal before a performance or the performance before a marching contest (excused or unexcused) may not be allowed to participate in performances immediately following the absence. This includes students that cannot participate in rehearsal because of lost coordinate cards. In addition, students that miss more than 1.5 hours of marching band rehearsal (excused or unexcused) during a given week may be removed from that week's performance(s). Students that miss a football game performance due to an excused absence will receive a make-up assignment to replace the test grade for the performance they missed. In the case of playoff games, Mr. Downs must receive written communication by the end of the day Monday the week of the playoff game in order for an absence to be given consideration for being excused.

REHEARSAL EXPECTATIONS

In band rehearsals, not only do we deal with a creative process, but also with a much larger number of students than the traditional classroom setting. Because of this, it is imperative that band students be **organized** and **prepared** for every rehearsal. When an individual is not able to play his musical instrument during a rehearsal, it hurts the GROUP as well as the individual. It is important that the student's musical instrument is in good working condition, that (s)he has a pencil to mark his/her music, and that (s)he has important accessories such as tuners/pickups, mutes, reeds, and valve oil for **EVERY** rehearsal. A student that does not have their own, current coordinate card at rehearsal will not be allowed to participate in any part of said rehearsal that involves marching drill. The creative process we are involved in cannot take place unless there is a quiet, attentive atmosphere in the classroom. Students who do not live up to the high rehearsal expectations of the Orange Wave Band will be

counseled, applied disciplinary action complying with the RISD Code of Conduct, and, if necessary, moved to a lower band or removed from the band program.

GRADING POLICY

All rehearsal participation and quizzes that happen during rehearsals will be treated as formative assessments. It is imperative to the success of our organization that ALL students be in attendance at every rehearsal. Students with unexcused tardies, unexcused absences, and that do not have the appropriate supplies will face grade deductions per infraction. The point deductions from the weekly participation grade (daily work) are as follows:

Unexcused Tardy – 20 points

Unexcused Absence – 30 points

No/Inappropriate Supplies – 20 points

All performances and playing tests will be treated as summative assessments. For performances, a 30 point deduction applies for tardies and inappropriate supplies. Students with an unexcused absence from a performance will receive a grade of zero for that performance.

ACADEMIC ELIGIBILITY

All musical organizations adhere to the eligibility rules and regulations as stated by TEA and RISD. Any student whose recorded grading period average in a course is lower than 70 at the end of a grading period shall be suspended from participation during the next grading period. However, a student may regain eligibility seven calendar days after the three-week evaluation period if the student is passing **all courses** on the last day of the three-school-week period. Students enrolled in certain upper-level courses may be exempt from these eligibility requirements for those classes ONLY. The district provides a list of the courses that are exempt from the *Texas No Pass, No Play Law*.

The Rockwall Band Staff will enforce all eligibility rules and regulations. Students who are ineligible may continue to attend all rehearsals as well as participate in curricular performances to earn his/her band grade. Ineligible students may not travel with the band or participate in extracurricular performances. An example of a curricular performance would be a spring concert and an extracurricular performance would be a football halftime or any type of contest. Be advised that excessive absences from school may also result in a student being declared ineligible.

The band staff and Rockwall High School staff work hard to assist and encourage band students to perform up to their potential in **ALL** classes. Since both Marching Band and Concert Band are group activities, each individual band student plays an important part in the success of the group. The band staff consults both with teachers and students for strategies for improving individual student performance. Obviously, we cannot achieve success as an ensemble unless our students are successfully passing **ALL** classes.

TUTORING

It is the belief of the RHS Band Staff that ALL students can succeed in their course work if they: are attentive in class, treat teachers with respect, show interest in their subjects, study hard, attend tutoring when necessary, and, MOST IMPORTANTLY, TURN WORK IN COMPLETE AND ON TIME!

Additionally, students will be allowed to attend teacher-led tutoring during marching rehearsals IF THEIR TEACHER DOES NOT OFFER TUTORING TIMES OTHER THAN DURING REHEARSAL. **Incomplete homework DOES NOT create a need for tutoring.** Students will be expected to clear tutoring during band

rehearsal with a director BEFORE rehearsal begins. Students will be expected to return their tutoring pass, SIGNED BY THE TEACHER, to the band office at the end of that rehearsal. Failure to do this will be considered as skipping rehearsal and will result in a deduction from the student's grade. Students and parents must also recognize that during certain times of the year no tutoring passes will be allowed (i.e. the last rehearsals leading to a major performance or contest, etc). Students who abuse these privileges WILL NOT be allowed to leave rehearsal for tutoring. During the Concert Band season, students MUST schedule their tutoring times AROUND their weekly sectional. This instrument specific content is presented ONE TIME per week and students are expected to attend.

PRIVATE LESSONS

All Orange Wave Band students are strongly encouraged to take private lessons in order to improve their individual playing skills, and all top band students are expected to be involved in some way in the private lesson program. Individual instruction from a qualified specialist on an individual musical instrument can make 'all the difference' in a student's progress on his/her musical instrument, thus making for a more enjoyable experience in band. While we, as directors, are skilled instructors on the various instruments in the band, there is simply no substitution for private instruction received from someone who is considered to be a professional performer on a particular instrument. Private lessons help students develop individually as musicians, as well as provide specific instruction for band music, region/area/state auditions, solo literature, technique and tone exercises, and much more. The Orange Wave Band directors will assist band students in scheduling lessons with the qualified teachers; however, we suggest you be aggressive in 'locking in' with a teacher as soon as possible. **Students interested in private lessons but unable to fulfill the financial obligations of lessons should complete the "Private Lesson Scholarship Application" and return it to Ms. Meadows. Applications must be submitted by August 31st** in order to be considered for the 2024-2025 school year. A complete listing of our private music instructors is listed on the Orange Wave Band website.

USE OF BAND HALL FACILITIES

Students are **welcome** to use the band hall practice rooms for practice either before or after school. Sometimes, however, the number of available places is limited, since both sectionals and private lessons take place before and after school. Due to the many **thousands** of dollars' worth of musical instruments that are in the band hall, we do ask that **ONLY** band students come into the band hall during the school day **and** before or after school. Students must ask their friends who are not in the band to wait for them either in the school hallway or outside. The Band Hall is a "safe haven." We stress that all band students be responsible and keep their equipment **PUT UP** in their lockers at all times. Many times, "clean-up" duty is assigned to untidy band members to help develop orderly skills.

SCHOOL INSTRUMENTS

Rockwall ISD provides school owned instruments in the double reed, low woodwind, selected brass, and percussion sections. These instruments are quite costly (example: concert Tuba - \$8,000) and are not normally owned by individuals. All of these instruments are sent to the repair shop and reconditioned during the summer. **Any damage or normal adjustment during the year is the responsibility of the band student who has signed for the instrument.** We expect the instrument to be returned in the same condition as when issued. Dings, dents, and other damage will be repaired at the student's expense. Rockwall ISD carries **NO** insurance on school instruments. If the instrument is stolen while checked out to a student, it is the **student's responsibility** to replace the instrument.

CONDUCT

The conduct of each band member should be above reproach. By the time a student reaches high school, he/she should know how to show appropriate behavior. The high standards set by the Orange Wave Band will be strictly enforced. Poor behavior is a sign of lack of pride and a lack of concern for the band. If a student's conduct in band or in any other class fails to meet our standards, he/she could be removed from their current band assignment. During marching season, the student could be removed from the marching band formation as well. Members who continually display inappropriate conduct or violate the policies of the school could be removed from the band program.

OFF CAMPUS TRAVEL POLICIES – GENERAL

Students who represent the Rockwall ISD on out-of-town trips are expected to maintain very high standards in every respect at all times. They are expected to attend and be on time for all sessions and activities scheduled for them. In the event of overnight trips, they are expected to be in their rooms at the times designated by their chaperones.

Each student will be responsible to one or more chaperones who will supervise the activities of the student for the trip. Negligence in attending required events, in meeting curfew requirements, or in failing to maintain our standards of conduct may make it necessary for the director to send the student home at his/her own expense. Student conduct on school-related trips: Self-discipline is the key element for a pleasant experience for both the adults and the student when the student is on a school-related trip. Students who are involved in a serious disciplinary offense on a school-related trip, such as the use, possession of, or being under the influence of illegal drugs or alcohol, stealing, fighting, going in the room of a member of the opposite sex, or some other serious offense will face disciplinary action which may include one or more of the following:

1. The student will be sent home from the trip at the parents' expense.
2. The student will be held liable for damages to property.
3. The student may be removed from this school activity as well as other school co-curricular activities.
4. The student may be placed in In-School-Suspension (ISS), Off-Campus-Suspension, or Alternative Education Placement.

Students' attire during school activities outside the school day should be in good taste. If there is any question of taste, the director's decision is final. Students will be expected to treat chaperones with respect at all times. In the event a parent chaperone gives needed supervision, band students must honor that with utmost respect.

IN GENERAL – Even though you will not always have a band shirt on, people will find out where you are from. You have the opportunity to make a tremendous name for Rockwall High School and for yourself. Be courteous and polite at all times. There is no way we can anticipate every possible scenario, so we ask for good judgment. Please use common sense. **RULE OF THUMB:** If there is any question in your mind as to whether you should do something or not...DON'T DO IT! It is better to be safe than sorry.

Students who are ineligible to participate at UIL Marching Contest will not be allowed to attend the Spring Trip. Additional details will be provided on your annual trip contract.

**WE ARE CONFIDENT THAT THERE WILL BE NO PROBLEMS.
IF WE ANTICIPATED A PROBLEM, WE WOULD NOT TRAVEL.**

POSSIBLE PROGRAM REMOVAL

Program Removal - Band is a competitive team that relies on the eligibility of students to remain competitive. Failure to adhere to team guidelines, student code of conduct, or school rules may result in removal from the team. Directors are responsible for determining which students remain on the team.

Academic Removal - A student that is academically ineligible for any grading term will be required to go to after school tutoring once a week for that class. Any student that is ineligible for two grading terms may be removed from the team. All team leadership positions are required to maintain an 80 or better in all classes.

Disciplinary Removal - A student that is a distraction or does not represent our program well in the community is subject to disciplinary removal. Program removal is at the sole discretion of the head director so long as these guidelines, Rockwall ISD fine arts Handbook, and Rockwall ISD policies and procedures are followed.

1. **Parent/Guardian Notification** - A Director will have a private discussion with the player that includes the rule that was broken and the expectations moving forward. The director will contact the parent with a summary of that meeting to the parent.
2. **Parent Conference** - The head director and the appropriate assistant director will meet with the parent and student to discuss specific (or patterns of) behavior and develop a plan that outlines consequences for continued violations.
3. **Program Removal** - The head director will inform the parent of continued issues and that a schedule change has been initiated removing the student from the program.

Any student that engages in behavior that rises to the level of a Class A misdemeanor, Out of School Suspension, or District Alternative Education Placement may be removed from the activity immediately.

FOOTBALL GAME POLICY

Orange Wave Band policy dictates that band students ride to and return from all away performances as a group using transportation provided by the district. On **rare** occasions, an emergency or conflict with other school-sponsored events necessitates that parents provide transportation to or from an off-campus performance. In such a situation a note signed by the parent should be presented to a director **PRIOR TO DEPARTURE** of the trip. An RISD alternate travel form is also required, which we will already have on file. This protects both the parents and the school.

Football games are fun, and we are there to support the team. However, we must maintain a class act at all times. Band members can stand up and YELL and SCREAM in support of the team throughout the game, but should always remain in his/her "spot." It is important to remain alert concerning all of the expensive equipment around you as well as the need to be ready to play at a moment's notice. **Only band students are allowed in the band section.**

CONCERT BAND UNIFORMS

All of our concerts are formal events. As such, all students will wear concert black as outlined by the directors. There will be **NO EXCEPTION** to this for any reason. Students out of uniform **WILL NOT** be allowed to participate in **ANY** portion (including recognitions, etc.) of the applicable concert/contest and will receive a test grade of **ZERO** for their performance.

MARCHING BAND UNIFORMS

It is a **privilege** to wear the Rockwall High School Band uniform. Make sure you have all parts of the uniform at each performance. If your uniform does not meet the high standard required in the Orange Wave Band, you are subject to being removed from a performance or not traveling with the band. This uniform is a symbol of pride and will be worn accordingly. For marching season, hair must be a natural color (no shades of green, purple, blue, pink, etc.) and the only piercings allowed will be studs in the earlobes. **You must wear all of the uniform or none of the uniform!** The only hats (other than the uniform hat) that may be worn with the uniform are Rockwall High School caps.

Here are some do's and don'ts that will help you and your uniform look great at all times:

- DO:** remember your band t-shirt, compression pants, scrub bottoms, solid white (calf length) TUBE socks, and marching shoes each time you will be wearing your uniform.
- DO NOT:** alter your uniform. Any necessary alterations will be completed at the beginning of the year.
- DO:** take extra time and care when hanging up your uniform. Pants hang folded on the crease, not the seat.
- DO NOT:** wear any additional jewelry with your uniform. This includes: watches, bracelets, necklaces that can be seen above coat neck-line, earrings or other piercings (students can wear SMALL round studs ONLY).
- DO:** Always store your hat in its hat box.
- DO:** remember to bring your instrument in spite of your excitement over your uniform!
- DO:** keep all hair under the hat (if you have long hair, this means your hair must be in the "super bun" at call time!)

Students dressed inappropriately will be given an opportunity to fix the issue. If they refuse or can't, they will not be allowed to perform with us and will receive a test grade of zero.

FINANCIAL OBLIGATIONS

A financial obligation sheet will go out to each student in advance of band registration day each year. This is an itemized list with costs clearly marked. It will also be clear which items are required and which items are optional. We try to keep our band fees as low as possible and have taken pride in keeping our average band fees well below that of most, if not all, competitive 6A high school band programs in the DFW metroplex.

SPRING TRIPS

It is the policy of the Rockwall Independent School District that students will receive the opportunity to travel as a member of their instrumental music program every year with every other trip being an out of state trip. These trips constitute an excellent performance opportunity for our band and are considered a major performance. In addition, these trips are a reward for hard work and dedication throughout the year. **Any student who is ineligible or to perform at any UIL Marching Contest (Region/Area/State) WILL NOT be allowed to attend the Spring Trip. In addition, all other band fees must be paid prior to trip departure or the student will not be allowed to board the bus to leave the school.**

BOOSTERS/FUNDRAISING

We are fortunate to have an active and supportive band booster club at RHS. More information about our booster organization can be found on our band website or by attending booster meetings. The booster organization does a lot to support our students throughout the year, but our main fundraiser is a crowdfunding campaign that happens annually in August and September. While Rockwall ISD supports the fine arts and specifically band very well, what we do is very expensive. The boosters do a great job raising funds allowing us to provide top-rate experiences for our students while keeping our band fees as low as possible. Joining the booster organization is THE best way for parents to get involved and have a front row seat to an activity that is going to allow their student to build relationships and make memories that will last a lifetime.

PRESTO

Student data is maintained on a secure web-based utility called “Presto Assistant.” Students/Parents are encouraged to check and update all necessary data at app.prestoassistant.com on a regular basis. Additionally, you can check your fee payments, attendance, trip account balance, and much more from the same website! Please visit it often!!!

WWW.ORANGEWAVEBAND.COM

WWW.ORANGEWAVEBAND.COM is the official home of the Orange Wave Band on the web! Students and parents should check the website OFTEN for current information and updated handouts. Every handout that you receive in class is placed on our website for you and your family to have immediate access to additional copies. Also, check the page often to find reminders of changes to the schedule, departure times for upcoming events, and SO MUCH MORE!

Occasionally student names and pictures are displayed on our band website to recognize academic and musical achievements. Your guardian’s signature on the *Program Guidelines Acknowledgment Form* signifies their consent to this policy. Parents who do not want their students displayed on the website should contact Ms. Meadows and notate this on their *Program Guidelines Acknowledgment Form*.

Rockwall High School Orange Wave Band



Letter Jacket Information

A letter jacket is one of the most visible parts of a school organization. Letter jackets may be ordered by band members who earn the required number of points and meet eligibility requirements. 1000 points are needed to earn a jacket.

Jackets will be ordered every Band Registration Day for band members who earned a jacket the previous year. Students must be currently enrolled in band to order and receive a letter jacket.

Total Needed: 1000

Points are awarded per year:

- Marching Band – 250 points
- Concert Band – 100 points
- Symphony Orchestra UIL – 100 points
- Jazz Band – 50 points
- Winter Guard – 150 points
- Musical Pit Orchestra – 25 points
- Band Council – 100 points
- All-Region Qualifier – 150 points
- All-Region Jazz Qualifier – 100 points
- Area Qualifier – 200 points
- All-State Jazz Taping Qualifier – 150 points
- All-State Qualifier – 500 points
- TSSEC Participant – 50 points

*In order to earn points in a certain category, a student must be academically eligible for all events pertaining to that category. Examples - A student who is ineligible for UIL marching contest will not earn points for Marching Band. A student who is ineligible for UIL Concert and Sight-Reading Contest will not earn points for Concert Band.

CONCLUSION

This document is meant to guide the decision-making process of students, parents, and directors of the Orange Wave Band. It is not, however, designed to be an all-inclusive list of rules and regulations. It is impossible to discuss each and every scenario that could face our band. The directors will use their best judgment to evaluate and interpret each situation and make decisions that are in the best interest of the Orange Wave Band and its membership. By signing the attached forms, you agree to uphold the rules and responsibilities of an Orange Wave Band member to the best of your ability. Please remember that the purpose of a program guidelines document is to provide information and create a framework within which important decisions can be made. Diligent adherence to these ideals will allow our program to continue to prosper. Thanks in advance for your dedication to our program.

TO BE RETURNED

Please return the Program Guidelines Acknowledgement Form to Ms. Meadows by **Wednesday, August 28, 2024.**

All forms must be completed and returned before your student will be allowed to attend subsequent performances with the band.